



**Primatics, Inc.**  
32114 Mallard Ave.  
PO Box 409  
Tangent, OR 97389-0409

---

tel: 541.791.9678 • fax: 541.791.9410 • [www.primatics.com](http://www.primatics.com)

**Company Contact:**  
Kyle Tomson, Primatics, Inc.  
[kylet@primatics.com](mailto:kylet@primatics.com)  
**fax: 541-791-9410**

-- MORE --

## FOR IMMEDIATE RELEASE

### **Primatics Introduces PDR210 High-Precision Rotary Positioning Stage** Cable interface supports flexible mounting and easy integration

Corvallis, OR, February 24th, 2005 – Primatics, Inc., an innovator in the industrial linear and rotary positioner markets, introduces its newest rotary stage: the PDR210 direct drive rotary stage. The PDR210 is an extension to the PDR rotary stage line, and offers a larger platform and 3 times more torque than the next largest PDR160 stage. The PDR210 is designed for rotary positioning applications such as semiconductor wafer inspection, high speed laser machining & precision metrology.

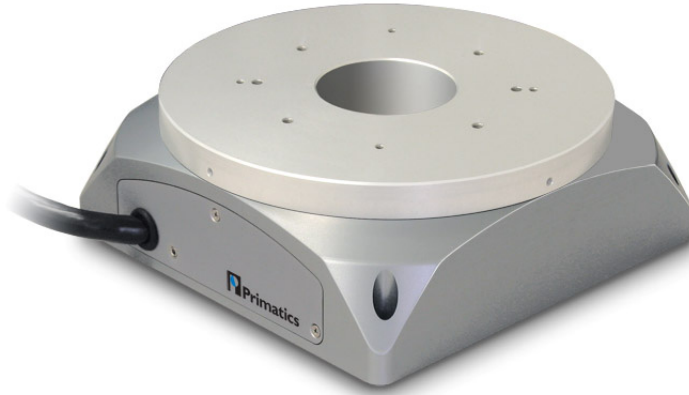
The PDR210 incorporates a state of the art glass scale encoder with a resolution down to 0.18 arc-sec, with repeatability of positioning to +/- 0.75 arc-sec. All encoder multiplication is accomplished internal to the PDR210, eliminating the need for external multiplication electronics. All motor, sensing and encoder signals are generated internally and combined into a single cable exiting to the outside world.

“The use internal encoder multiplication on the stage is a Primatics hallmark,” said Alan Petersen, Primatics President. “This allows the PDR210 to have much simpler connector scheme and only one cable exiting the stage. From there, the encoder signals can be wired directed into the motion controller, eliminating all external multiplication hardware. Mating cables are provided for Primatics’ popular MDC drive chassis, making the PDR210 a truly ‘plug and play’ solution.”

A high pole count frameless motor in a direct-drive configuration powers the drive, ensuring minimal velocity ripple across a large dynamic range, while precision cross roller bearings provide stiffness, smoothness and high load capacity. Motor and bearing components are oversized for high load and torque capability. A large center through-hole allows convenient routing of optics and vacuum lines.

In business since 1997, Primatics focuses on delivering optimized solutions to meet specific application needs for precise and reliable motion. While supporting demanding customers’ requirements for high performance and reliability, Primatics’ linear and rotary motion stages are also designed to be the easiest to use. Design engineers in product development departments around the world, at companies such as Hewlett Packard, Seagate, Hitachi and ASML, look to Primatics to meet their precision positioning needs.

The PDR210 comes with encoder resolutions ranging from 0.18 to 11.25 arc-sec. Prices start at \$7049 with delivery of 6-8 weeks. For more information, see [www.primatics.com](http://www.primatics.com).



Primatics PDR210 Direct Drive Rotary Stage